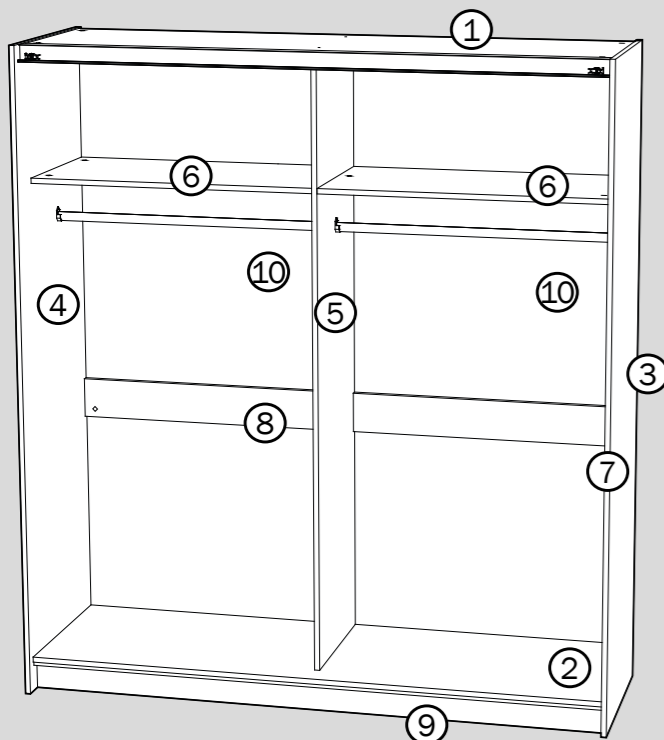


CASCO DE ARMARIO

Roupeiro Wardrobe Armoire



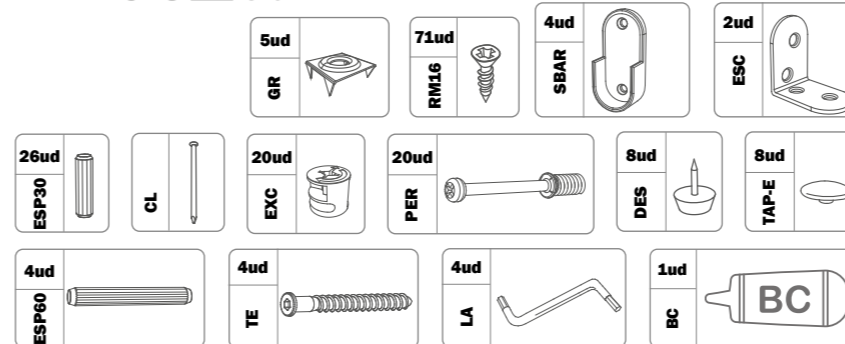
Alto: 2000mm
Altura - Height - Hauteur
Ancho: 1800mm
Largura - Width - Largeur
Fondo: 600mm
Profundidade - Depth - Profondeur

K-900

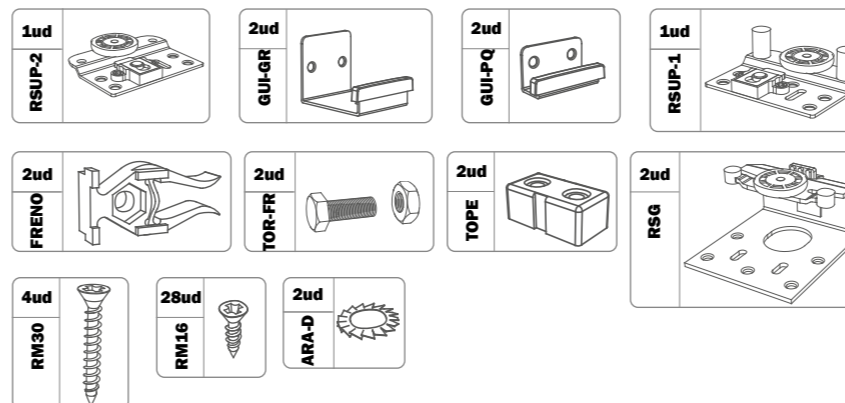
- 1 **Techo 1768x510x16**
Superior - Top - Toit
- 2 **Fondo 1768x528x16**
Inferior da Armario - Bottom - Tablette du Bas
- 3 **Costado Derecho 2000x550x16**
Lateral Derecho - Right side - Côté droit
- 4 **Costado Izquierdo 2000x578x16**
Lateral Esquermo - Left side - Côte gauche
- 5 **Costado Interno 1873x448x16**
Lado Interior - Internal Side - Côté Intérieur
- 6 **Estante fijo 876x446x16**
Prateleira Fixa - Fixed tier - Étagère Fixe
- 7 **Barra Trasera Drch 876x124x16**
Barra Trasera Dereita - Right Back Bar - Barre Arrière Droite
- 8 **Barra Trasera Izq 876x124x16**
Barra Trasera Esquerda - Left Back Bar - Barre Arrière Gauche
- 9 **Zócalo 1768x92x16**
Rodapé - Skirting Board - Plinthe
- 10 **Trasera 1904x445x3**
Painel Traseiro - Back panel - Panneau D'Arrière

BOLSA DE HERRAJES 1

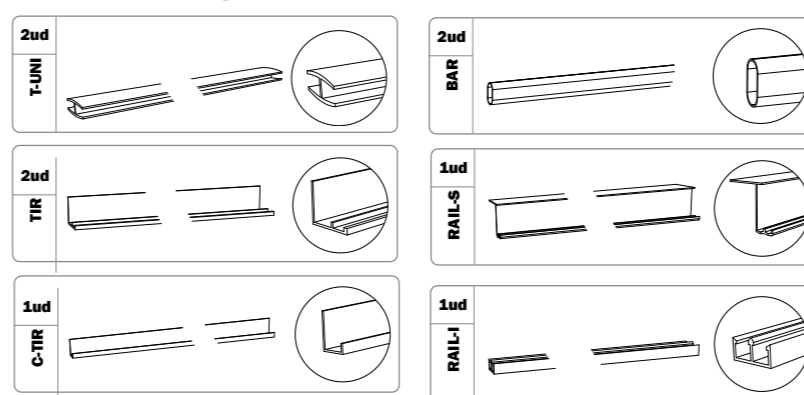
BOLSA DE FERRAGEMS
HARDWARE BAG
SAC MATÉRIEL



BOLSA DE HERRAJES 2



HERRAJES FERRAGEMS INDEPENDENTES



ES. El montaje del mueble deberá realizarse siguiendo las instrucciones del fabricante, en caso contrario, puede haber riesgo de seguridad por caída o vuelco, que pueden provocar lesiones graves, por lo que deberán seguirse las siguientes instrucciones de seguridad:

- Evita poner objetos pesados sobre el producto.
- Evita que los niños se apoyen en los cajones o estantes.
- Es recomendable poner los objetos más pesados en la parte inferior del mueble.

El mueble deberá fijarse a la pared. En caso contrario puede haber riesgo de seguridad por caída o vuelco que pueden provocar lesiones graves. Para encontrar el sistema de sujeción adecuado a su pared póngase en contacto con su especialista más cercano.

PT. A montagem do mobiliário deve ser efectuada de acordo com as instruções do fabricante, caso contrário pode haver um risco de segurança devido a queda ou tombamento, que pode causar ferimentos graves, pelo que devem ser seguidas as seguintes instruções de segurança:

- Evite colocar objetos pesados no produto.
- Impede que as crianças se inclinem em gavetas ou prateleiras.
- É aconselhável colocar objetos pesados na parte inferior do gabinete.

O mobiliário deve ser fixado. Caso contrário, pode haver um risco de segurança devido a queda ou tombamento, o que pode causar ferimentos graves. Contacte o seu especialista mais próximo para encontrar o sistema de fixação correcto.

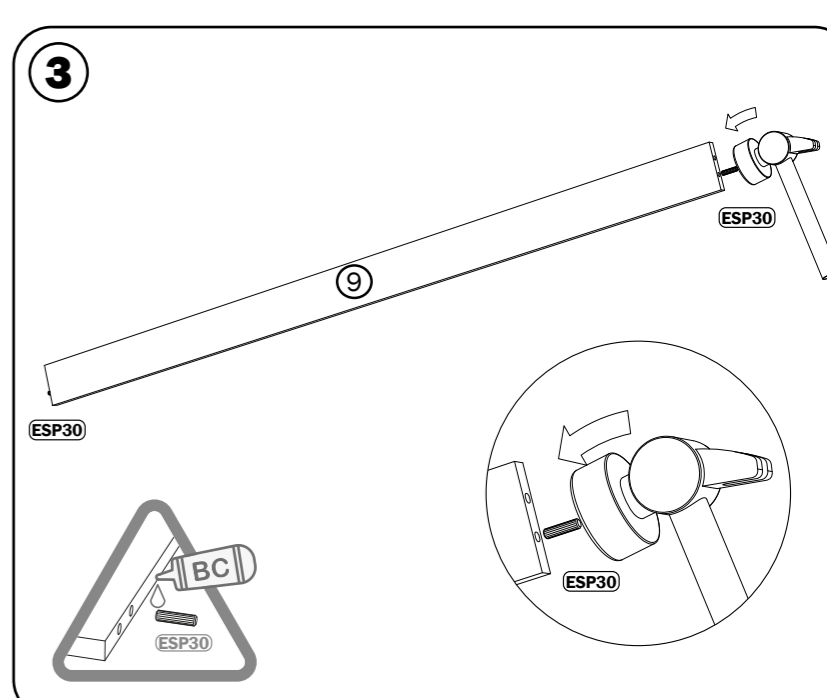
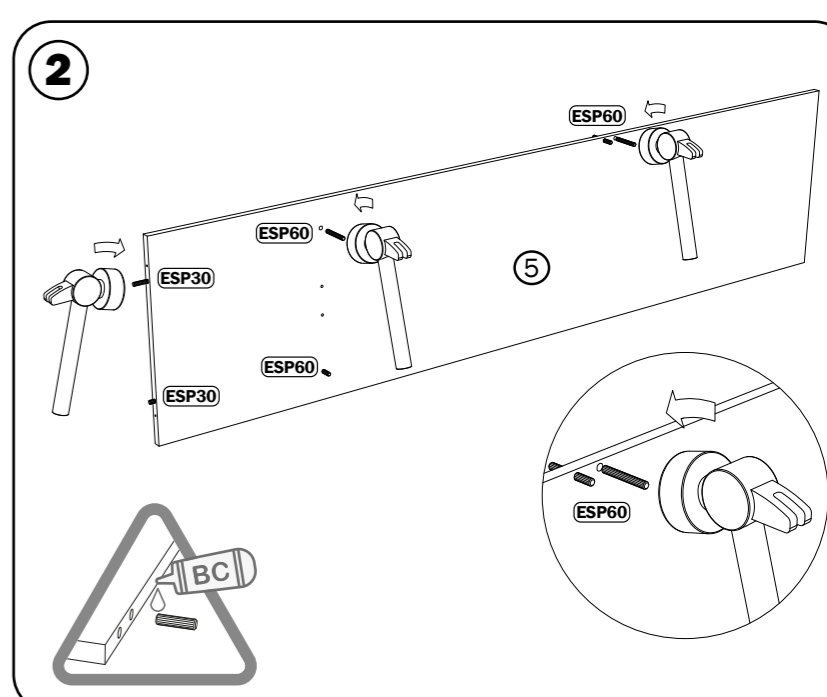
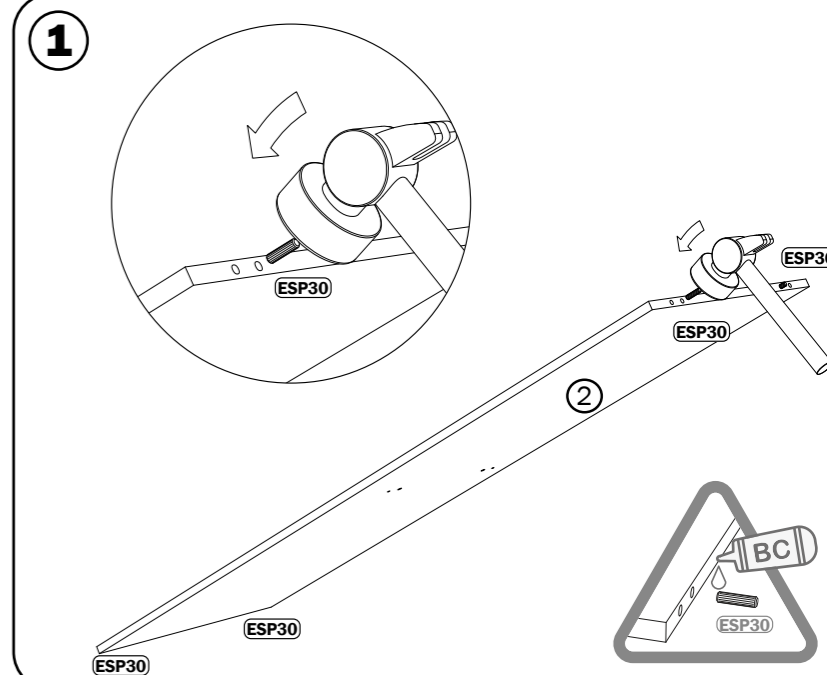
EN. The assembly of the furniture must be carried out according to the manufacturer's instructions, otherwise there may be a safety risk due to falling or tipping over, which can cause serious injuries, therefore the following safety instructions must be followed:

- Avoid putting heavy objects on the product.
 - Prevents children from leaning on drawers or shelves.
 - It is advisable to put heavy objects on the bottom of the cabinet.
- The furniture must be fixed to the wall. Otherwise, there may be a safety risk due to falling or tipping over, which can cause serious injuries. Contact your nearest specialist to find the right attachment system.

FR. Le montage des meubles doit être effectué conformément aux instructions du fabricant, sinon il peut y avoir un risque de sécurité dû à une chute ou un renversement, qui peut causer des blessures graves, c'est pourquoi les instructions de sécurité suivantes doivent être respectées:

- Éviter de poser des objets lourds sur le produit
- Empêchez les enfants de s'appuyer sur les tiroirs ou les étagères.
- Il est conseillé de placer les objets lourds au fond de l'armoire.

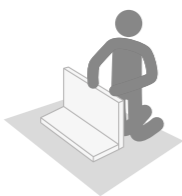
Les meubles doivent être fixés. Sinon, il peut y avoir un risque de sécurité en cas de chute ou de basculement, ce qui peut entraîner des blessures graves. Contactez votre spécialiste le plus proche pour trouver le bon système de fixation.



ADVERTENCIAS DE MONTAJE

INDICAÇÕES DE MONTAGEM
ASSEMBLY INFORMATION
AVERTISSEMENTS D'ASSEMBLAGE

ES. Montaje del mueble sobre una superficie de protección.
PT. Monte os móveis em uma superfície protetora.
EN. Mount the furniture on a protective surface.
FR. Montez le meuble sur une surface de protection.



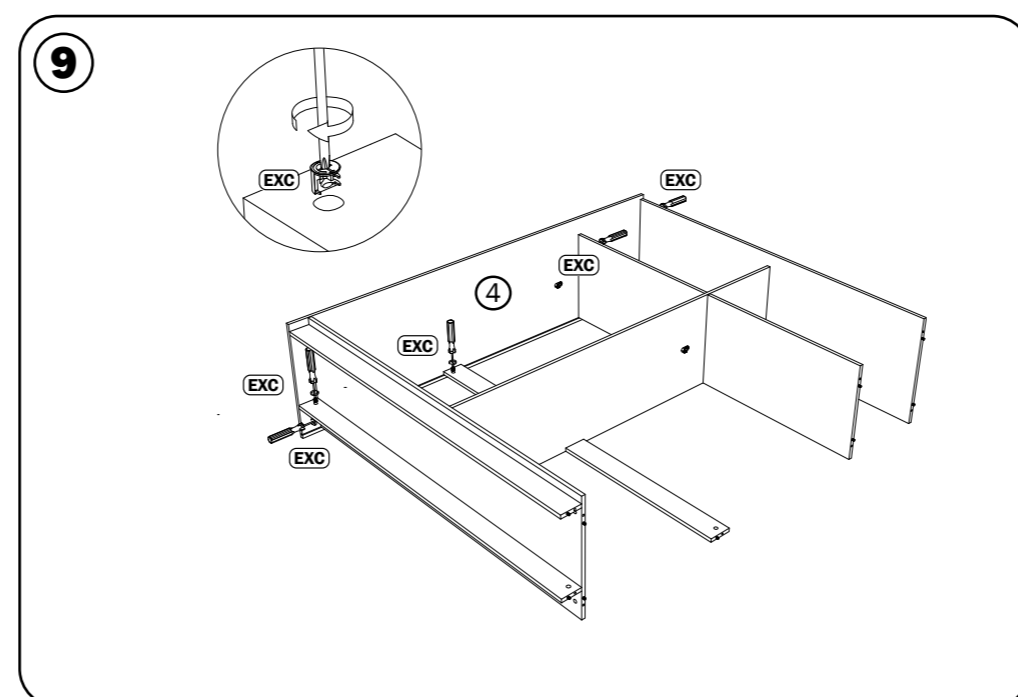
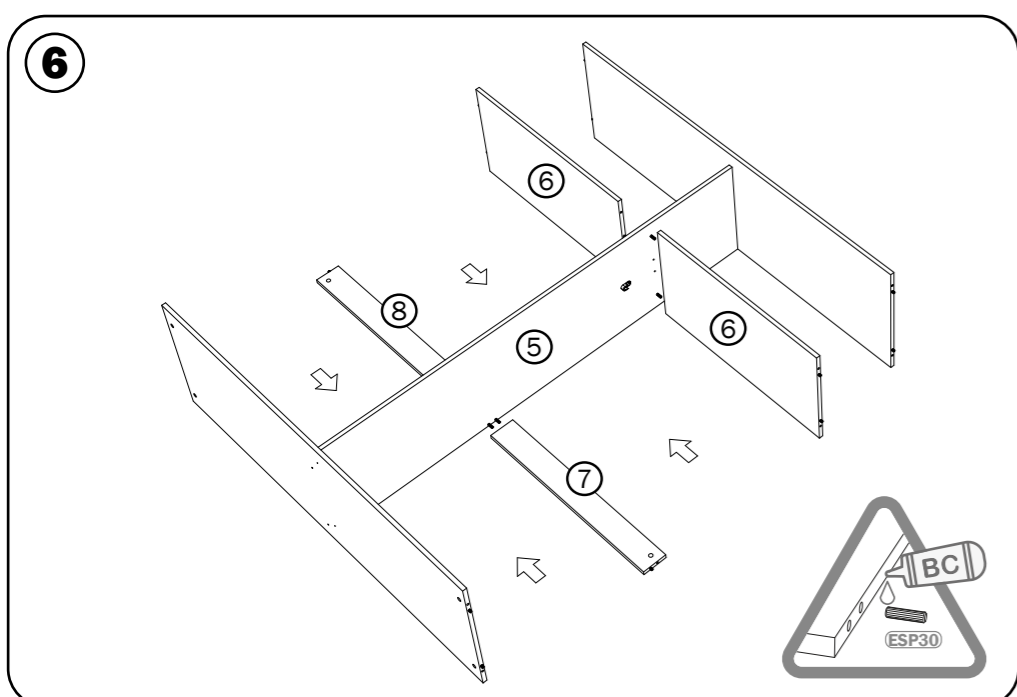
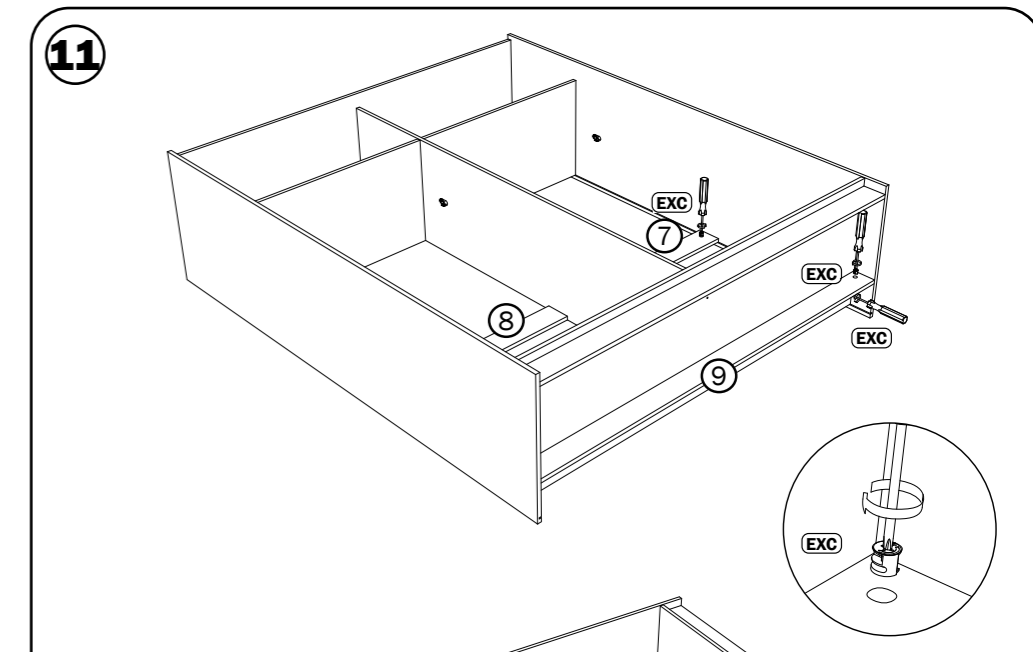
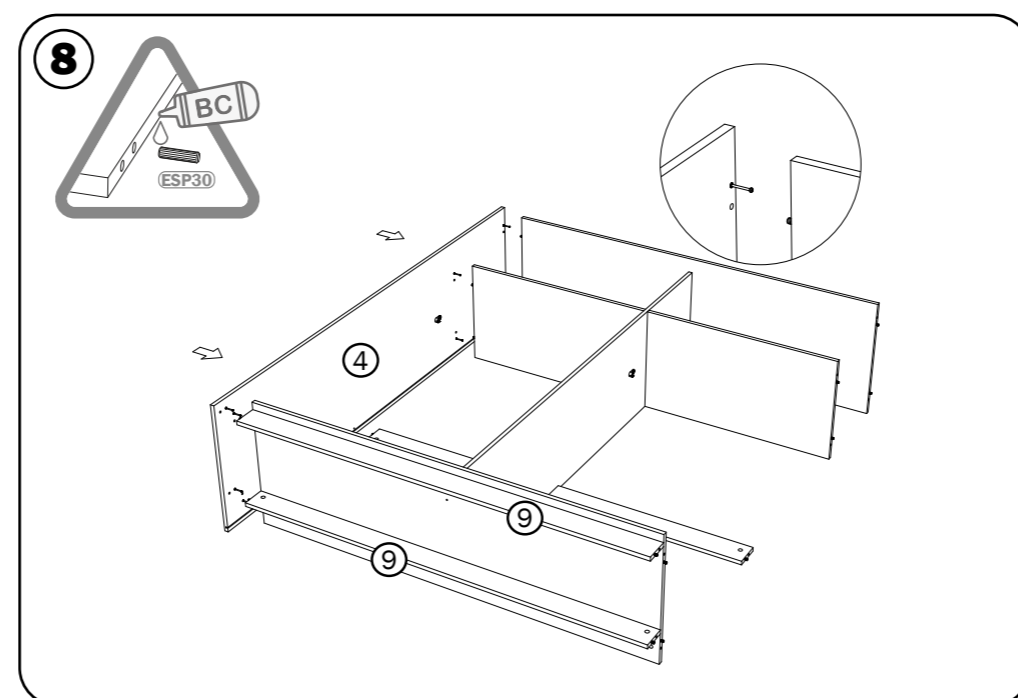
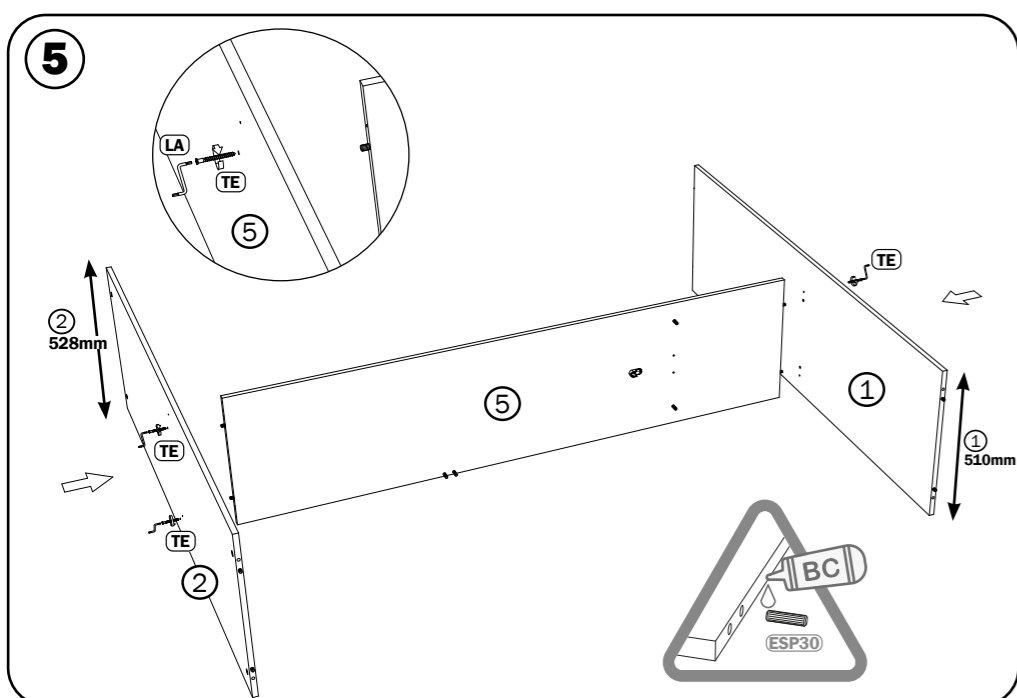
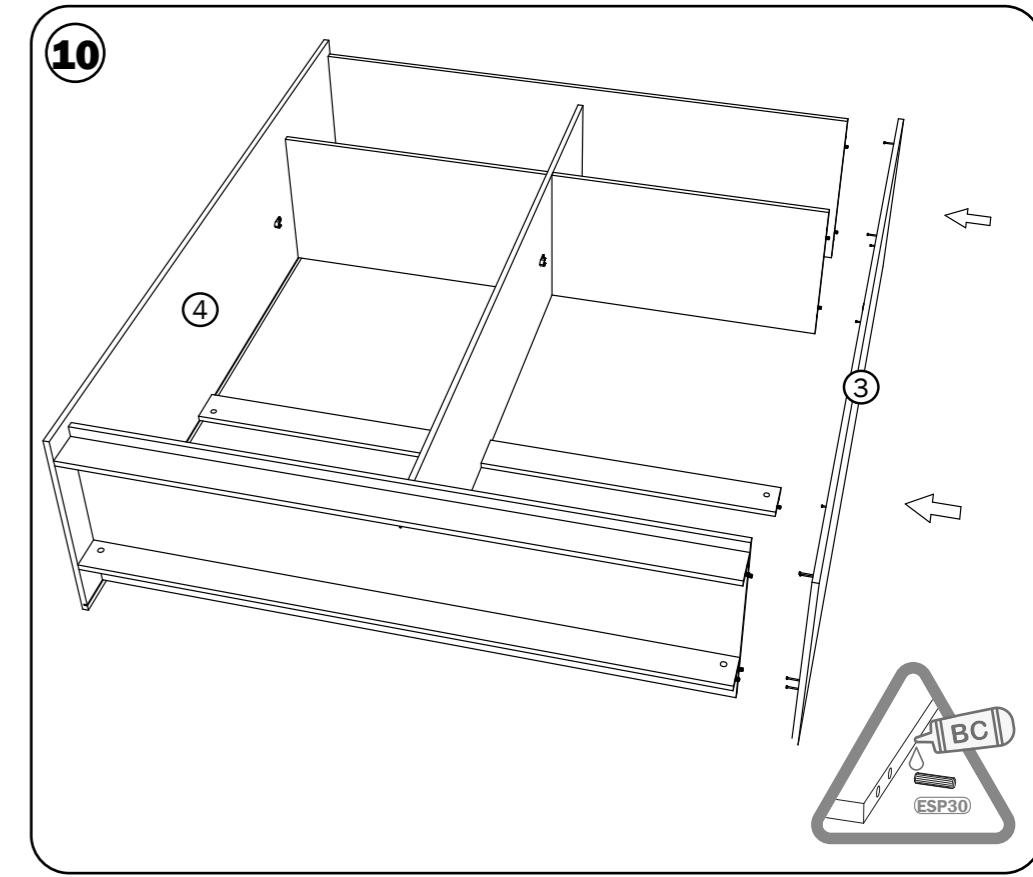
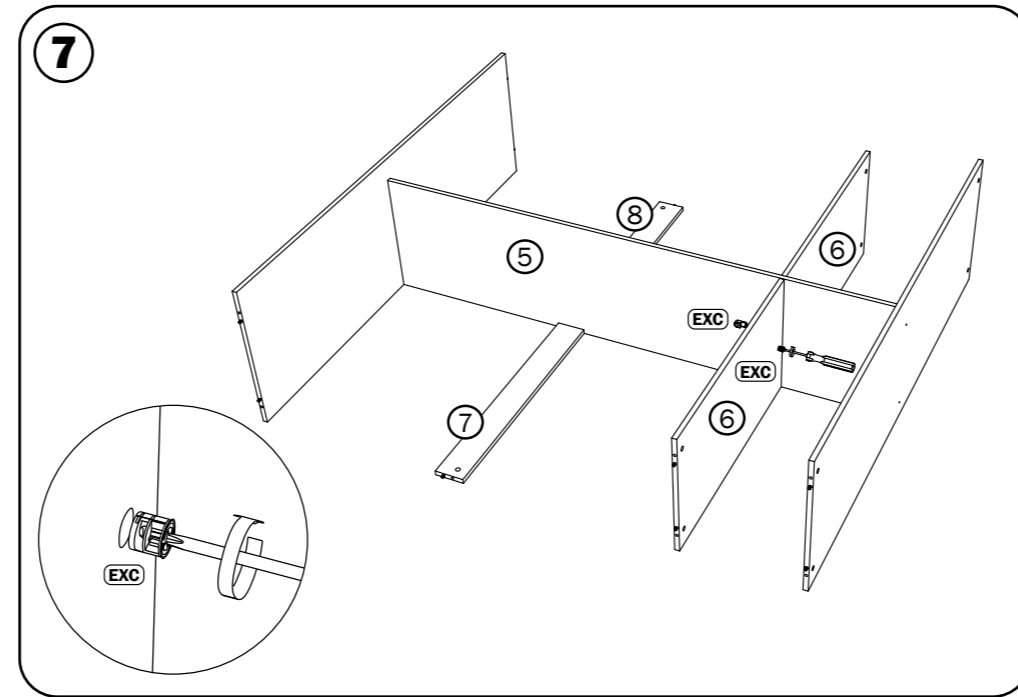
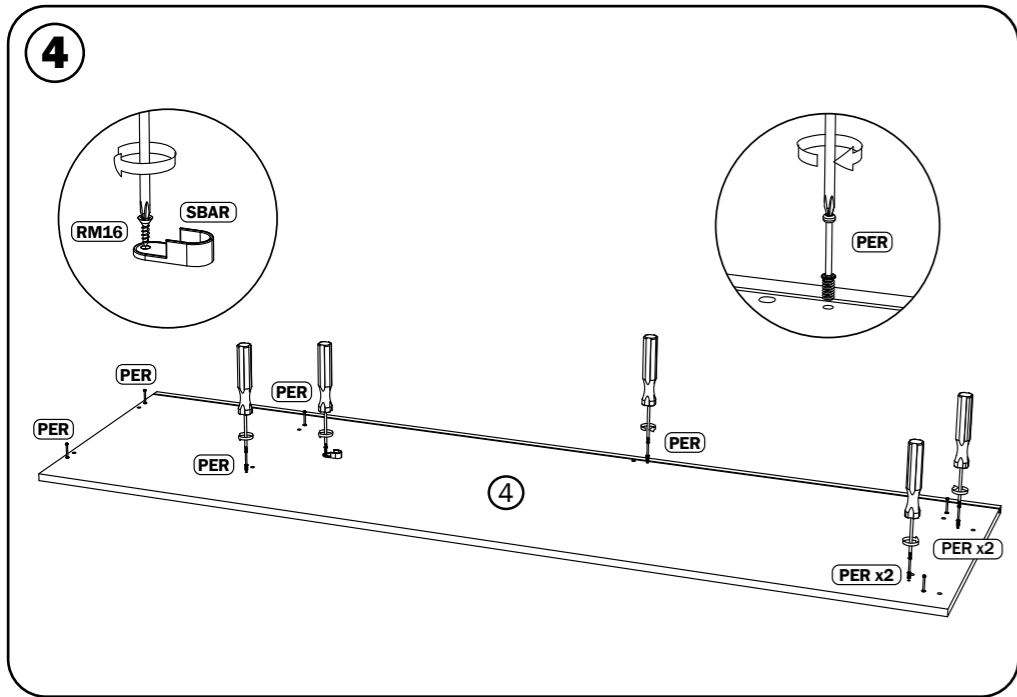
ES. Material necesario para el montaje del mueble.
PT. Material para o qual você deve usar montagem.
EN. Material that you have to use for assembly.
FR. Matériel que vous devez utiliser pour l'assemblage.

ES. Algunos pasos del montaje requieren de dos personas para su correcta realización.
PT. Alguns etapas exigem 2 pessoas para para sua montagem.
EN. Some assembly steps require two people.
FR. Certaines étapes d'assemblage nécessitent deux personnes.

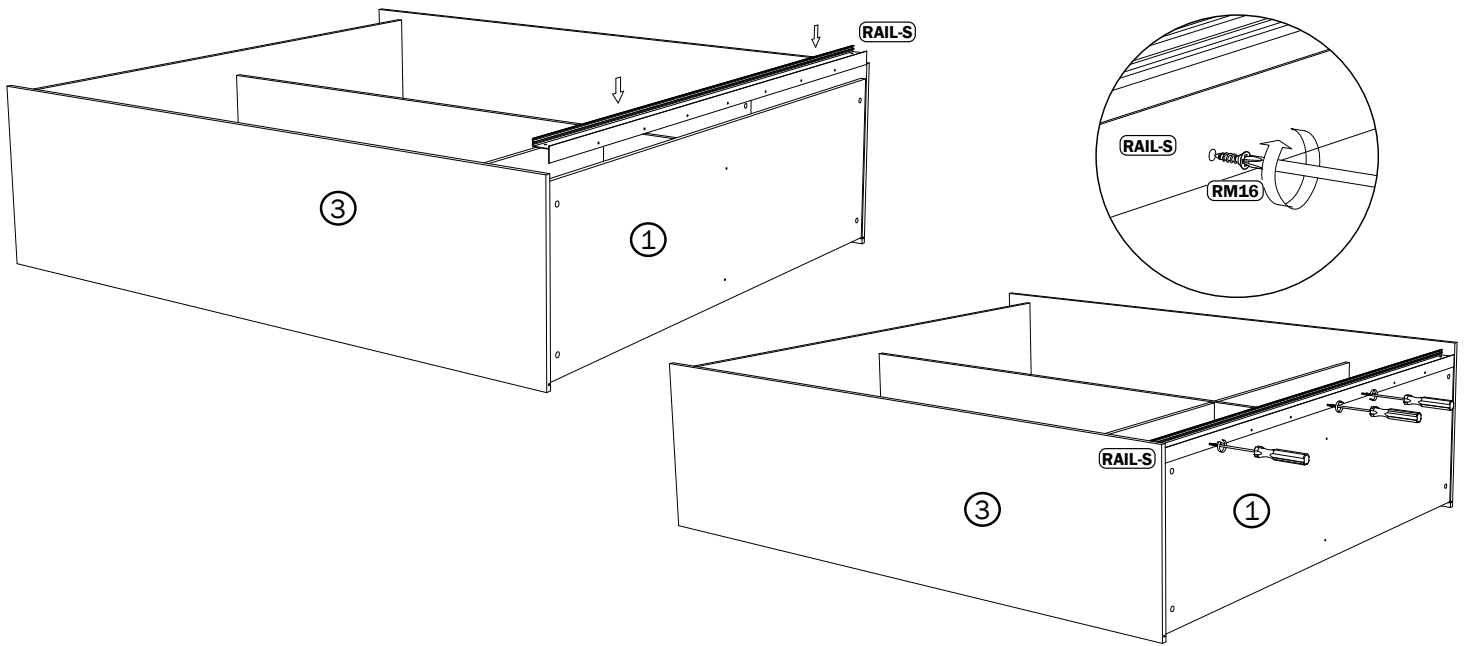


ES. No ingerir.
PT. Não ingerir.
EN. Do not swallow.
FR. Ne pas ingérer.
ES. Agitar antes de su uso.
PT. Agite antes de usar.
EN. Shake before use.
FR. Agiter avant utilisation.

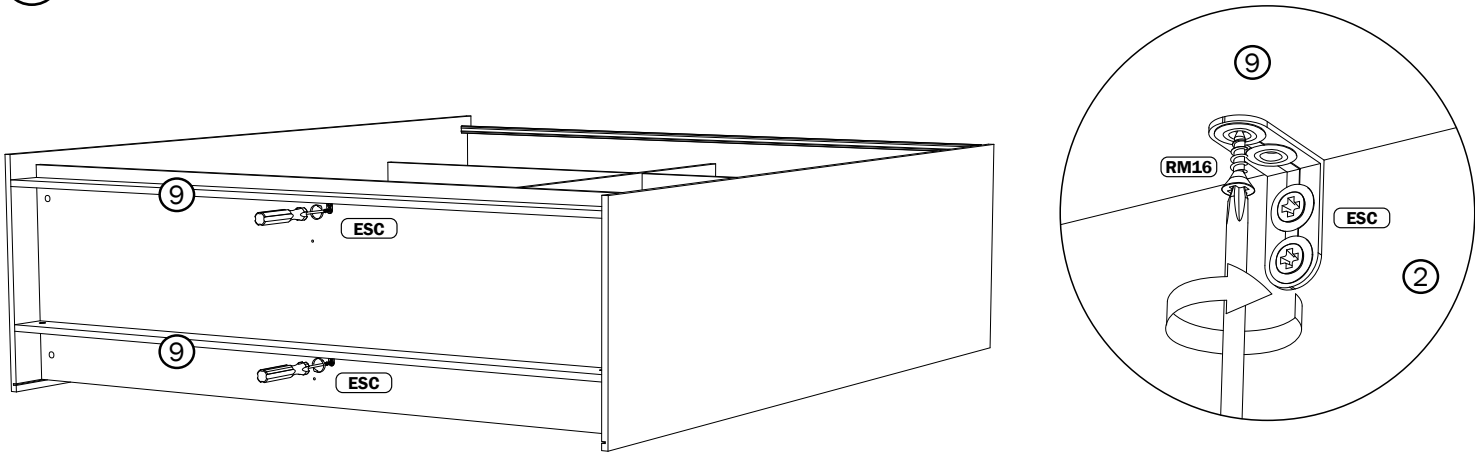




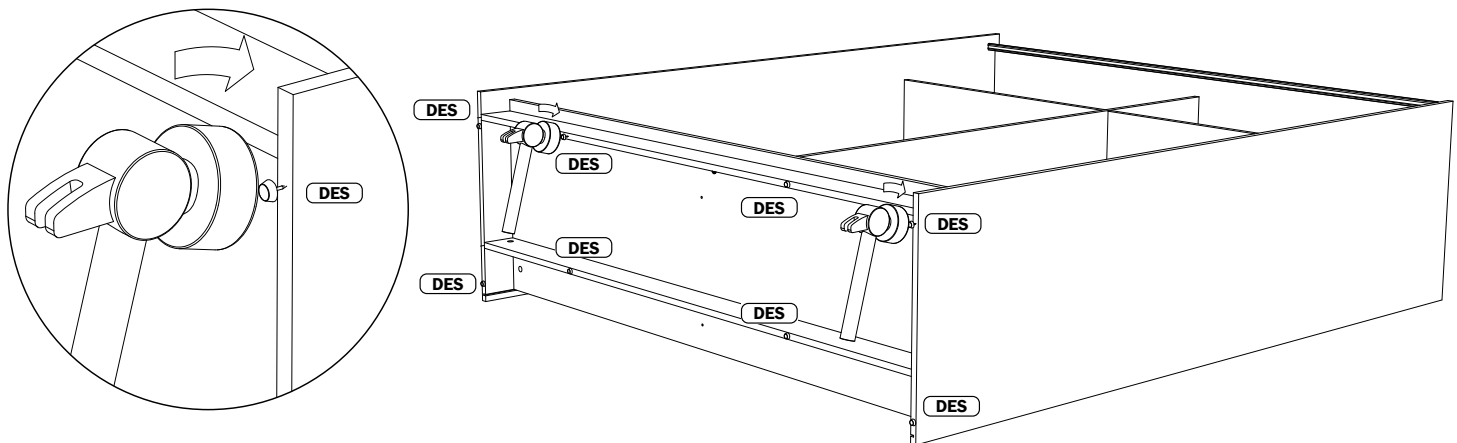
12



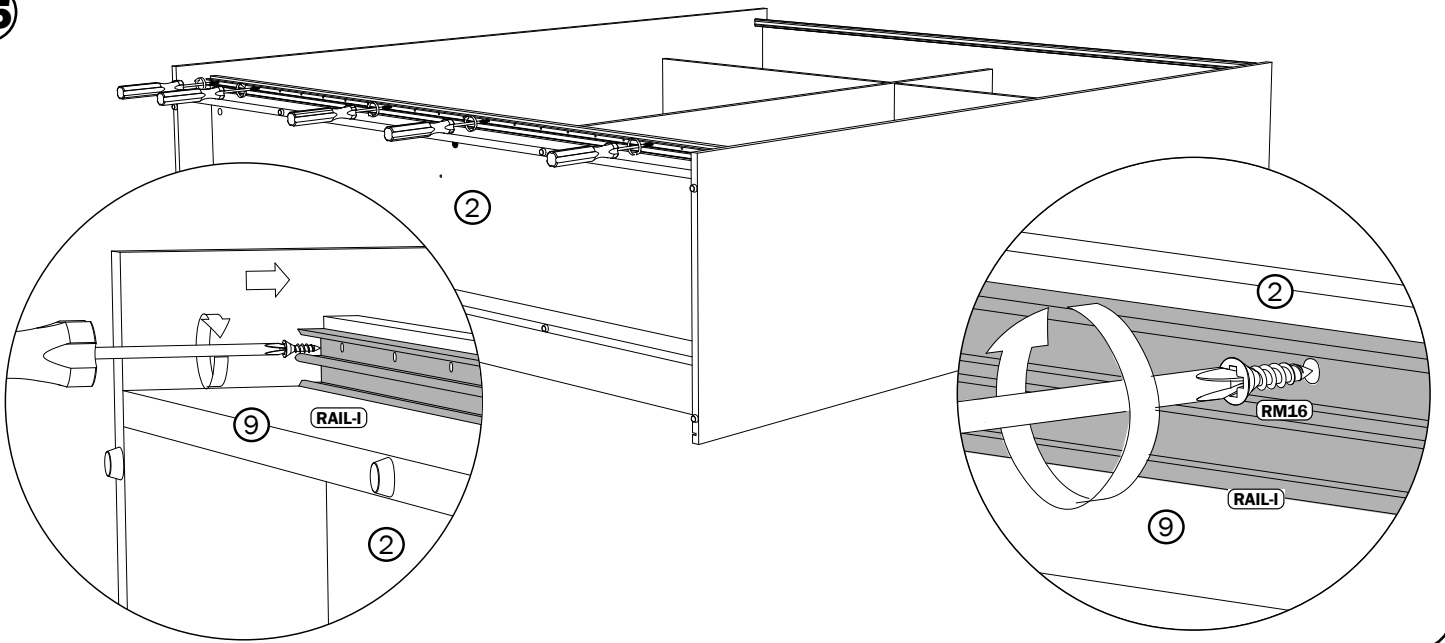
13



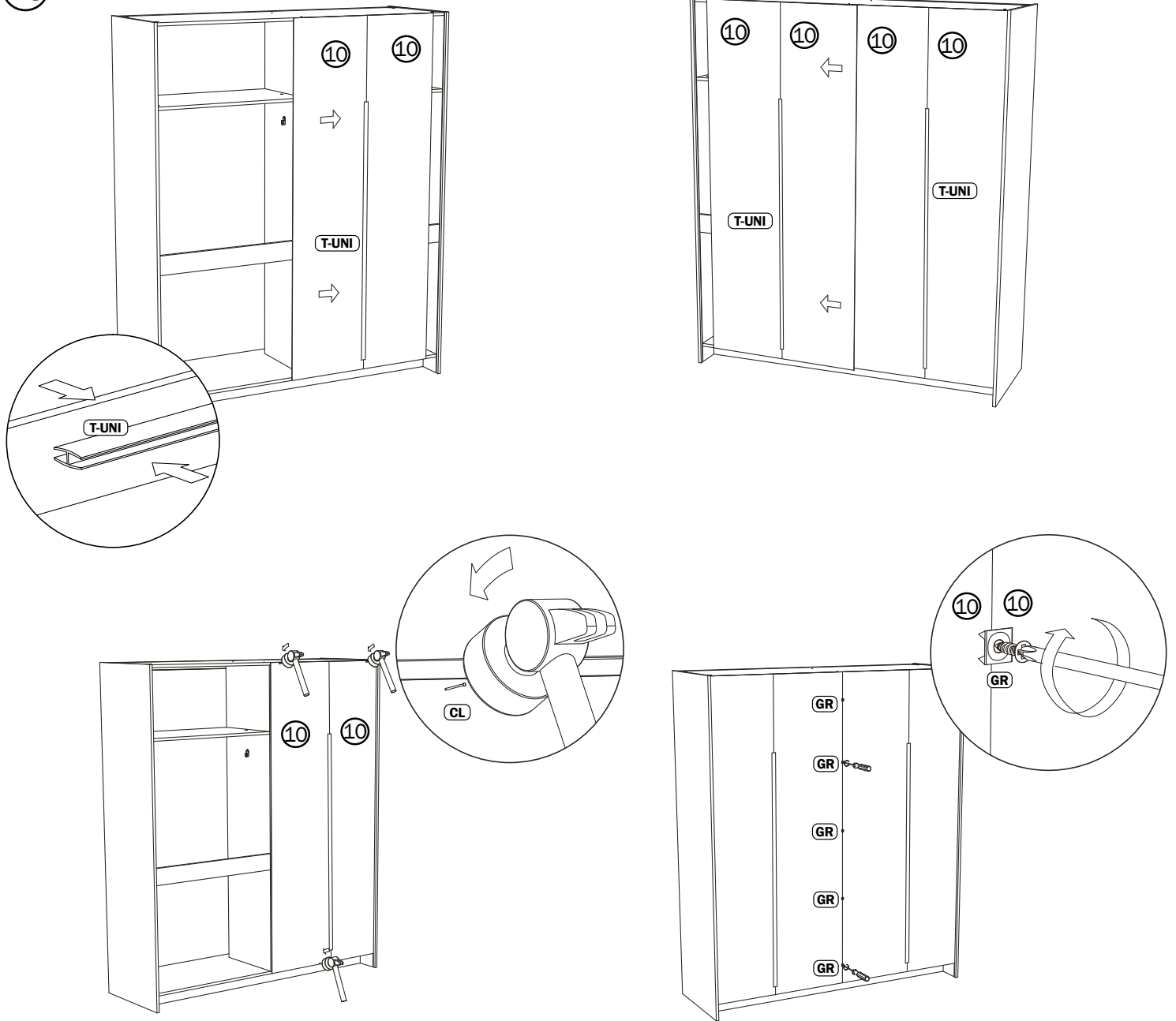
14



15



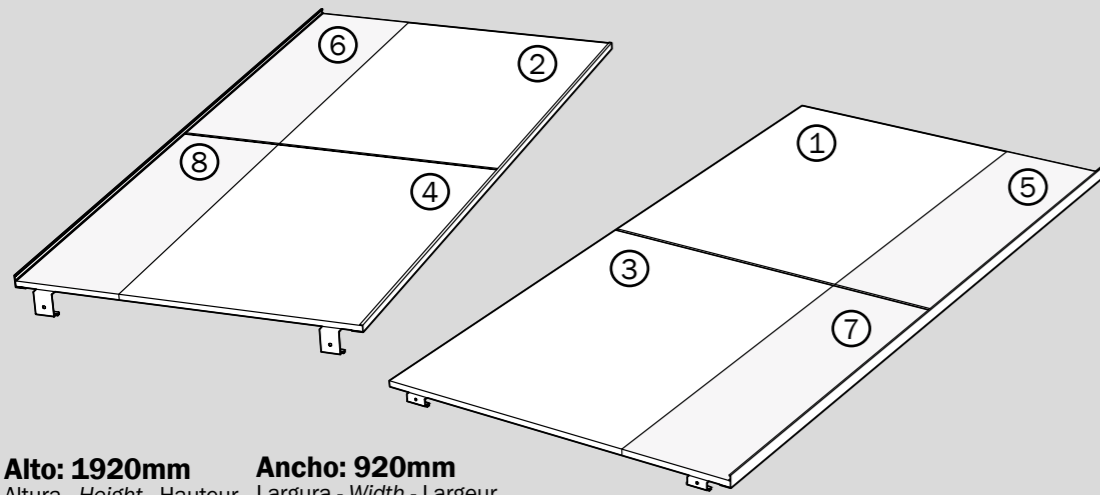
16



PUERTAS CORREDERAS

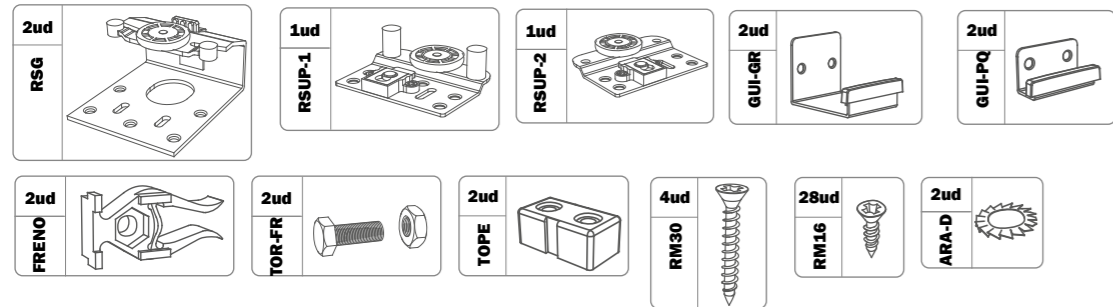
Roupeiro Wardrobe Armoire

K-902



Alto: 1920mm **Ancho: 920mm**
 Altura - Height - Hauteur Largura - Width - Largeur

BOLSA DE HERRAJES 2 BOLSA DE FERRAGEMS HARDWARE BAG SAC MATÉRIEL PAQUETE DE ARMARIO PACOTE DE ROUPEIRO WARDROBE PACKAGE PACKAGE D'ARMOIRE NO NECESARIO EN EL MODELO K-900



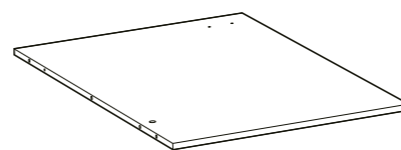
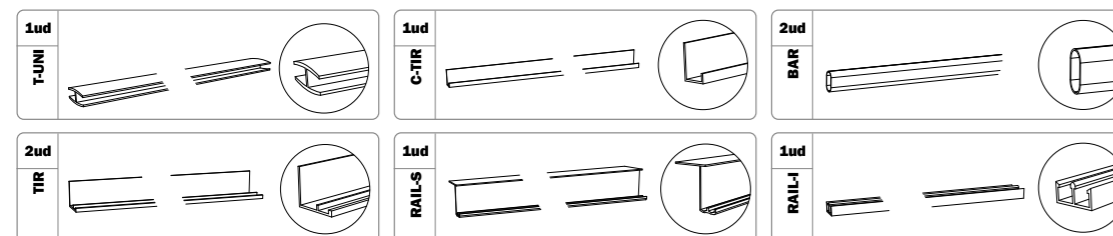
BOLSA DE HERRAJES 1 BOLSA DE FERRAGEMS HARDWARE BAG SAC MATÉRIEL 71ud RM16

BOLSA DE HERRAJES 3 BOLSA DE FERRAGEMS HARDWARE BAG SAC MATÉRIEL PAQUETE DE PUERTAS PACOTE DE PORTAS DOORS PACKAGE PACKAGE DE PORTES

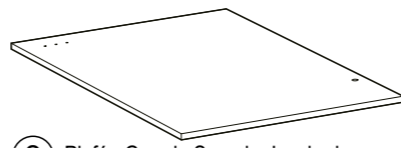


HERRAJES INDEPENDIENTES FERRAGEMS INDEPENDENTES INDEPENDENT HARDWARE MATERIAL INDÉPENDANT PAQUETE DE PUERTAS PACOTE DE PORTAS DOORS PACKAGE PACKAGE DE PORTES 2ud T-PUE

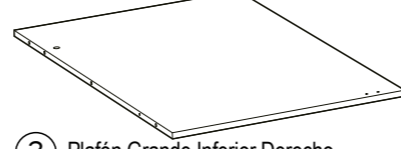
HERRAJES INDEPENDIENTES FERRAGEMS INDEPENDENTES INDEPENDENT HARDWARE MATERIAL INDÉPENDANT PAQUETE DE ARMARIO PACOTE DE ROUPEIRO WARDROBE PACKAGE PACKAGE D'ARMOIRE



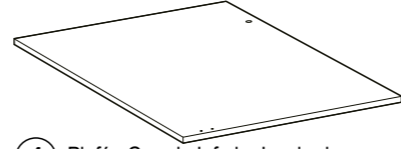
1 Plafón Grande Superior Derecho
 959x640x16
 Teto grande superior direito
 Big upper-right panel
 Panneau grand supérieur droit



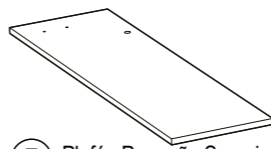
2 Plafón Grande Superior Izquierdo
 959x640x16
 Teto grande superior esquerdo
 Big upper-left panel
 Panneau grand supérieur gauche



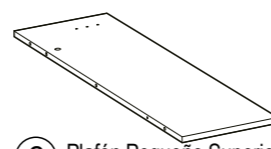
3 Plafón Grande Inferior Derecho
 959x640x16
 Teto grande inferior direito
 Big bottom-right panel
 Panneau grand inférieur droit



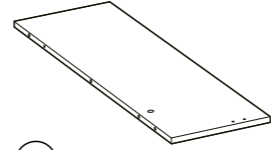
4 Plafón Grande Inferior Izquierdo
 959x640x16
 Teto grande inferior esquerdo
 Big bottom-left panel
 Panneau grand inférieur gauche



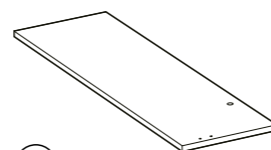
5 Plafón Pequeño Superior Derecho
 280x959x16
 Teto pequeno superior direito
 Small upper-right panel
 Panneau petit supérieur droit



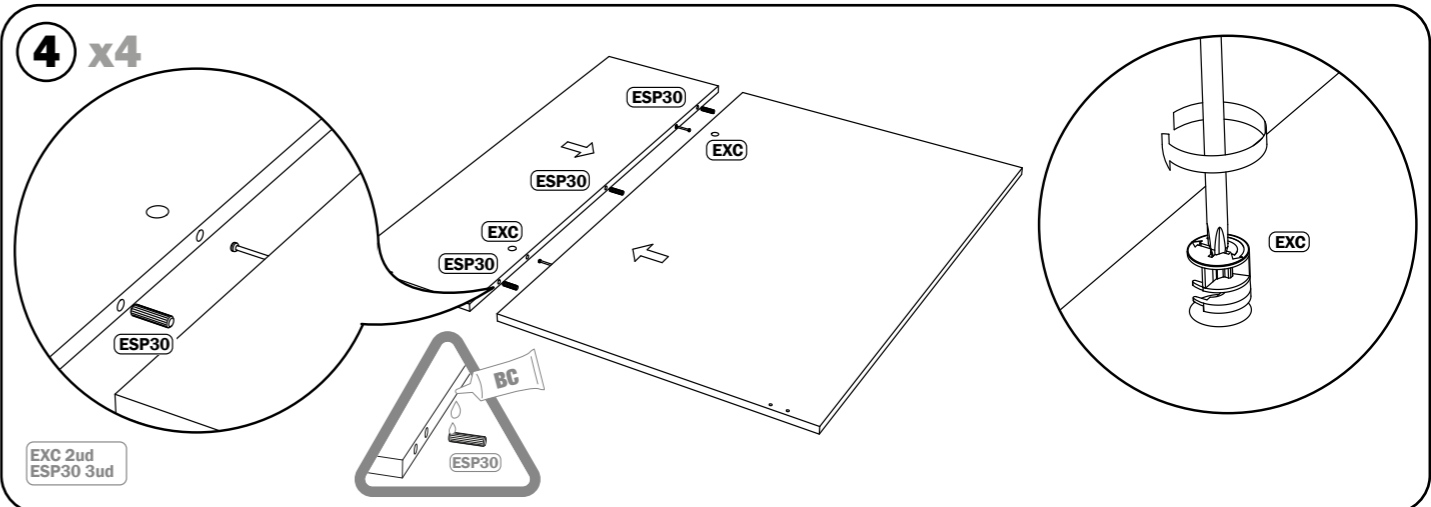
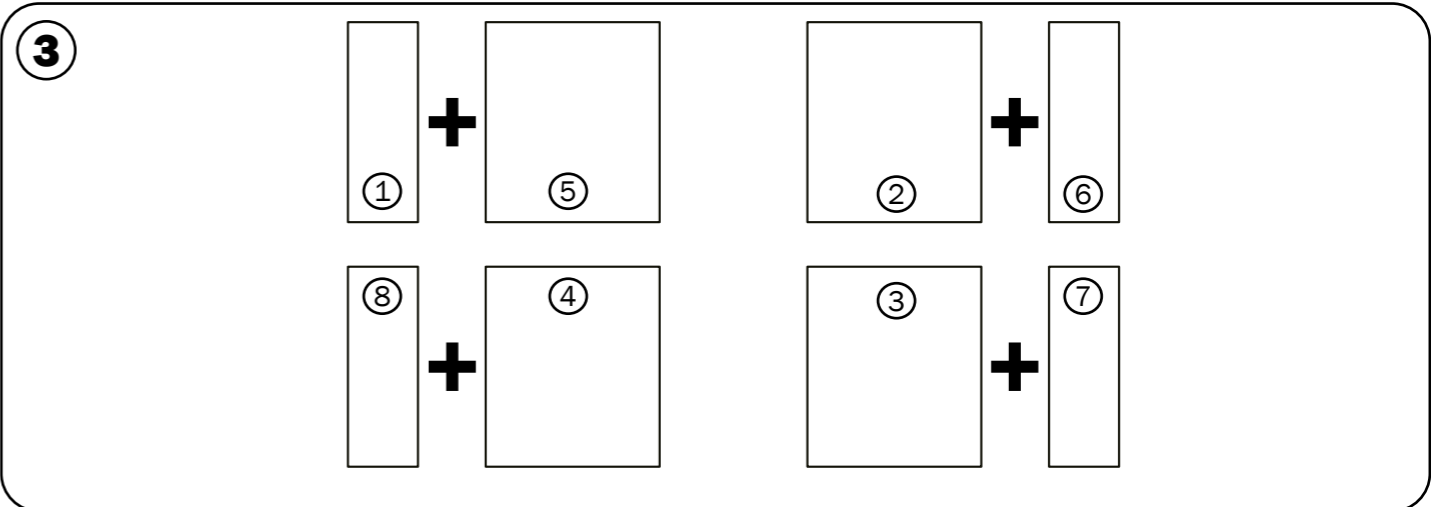
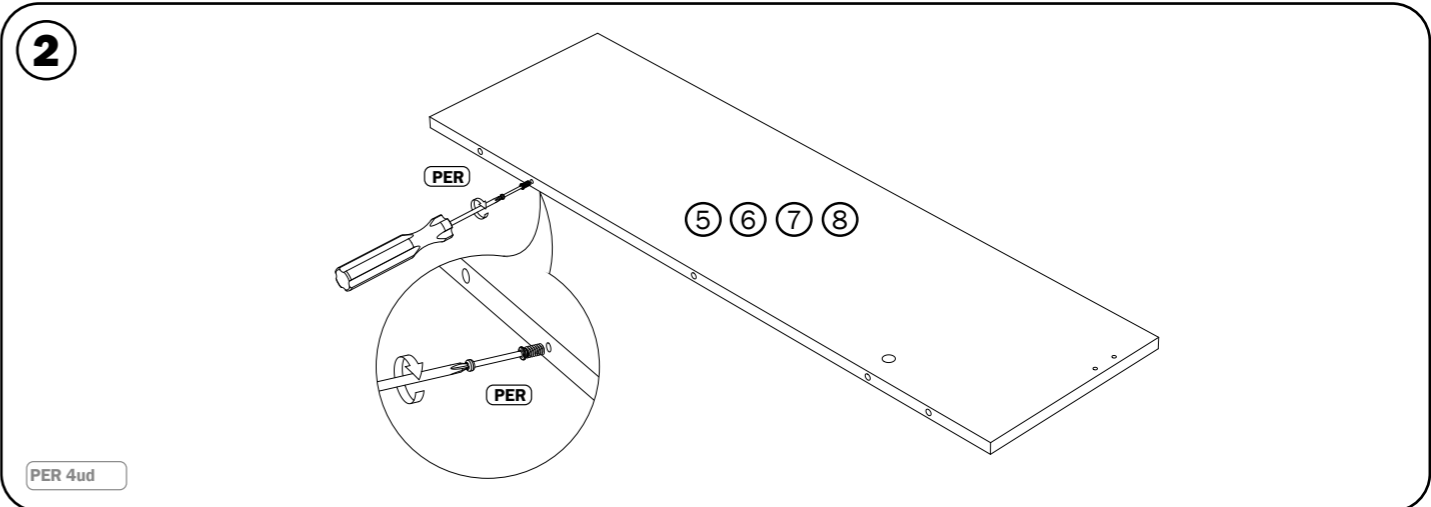
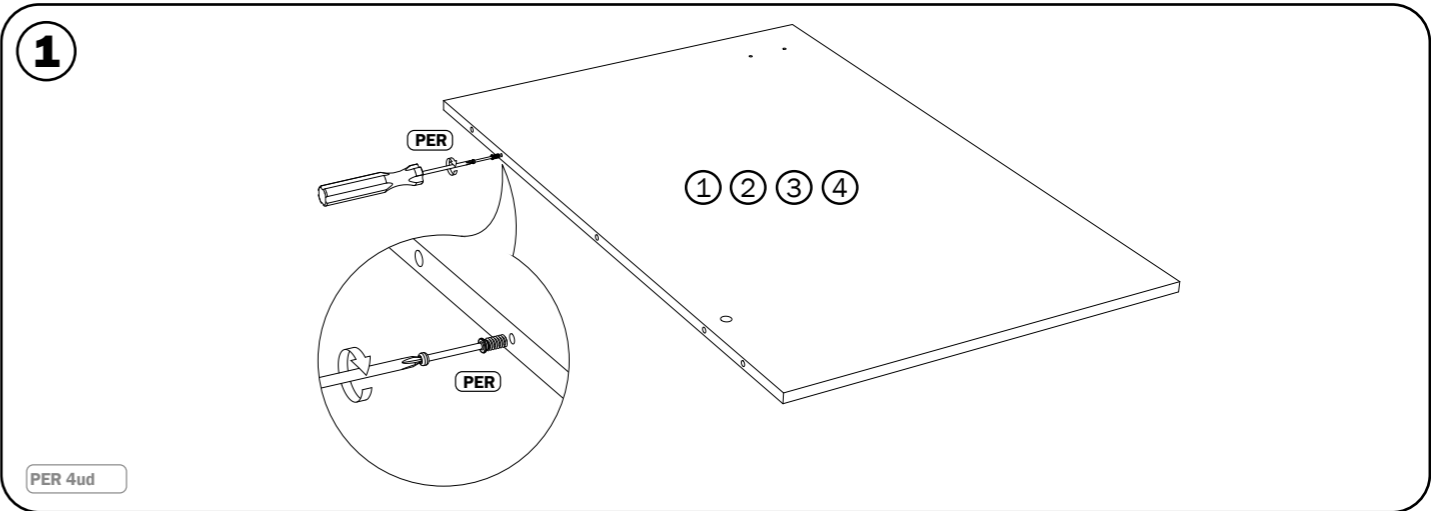
6 Plafón Pequeño Superior Izquierdo
 280x959x16
 Teto pequeno superior esquerdo
 Small upper-left panel
 Panneau petit supérieur gauche



7 Plafón Pequeño Inferior Derecho
 280x959x16
 Teto pequeno inferior direito
 Small bottom-right panel
 Panneau petit inférieur droit

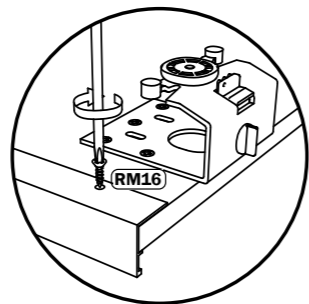
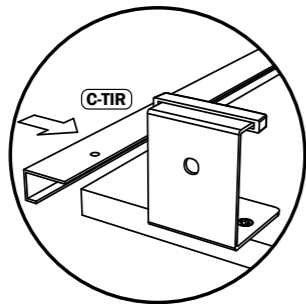
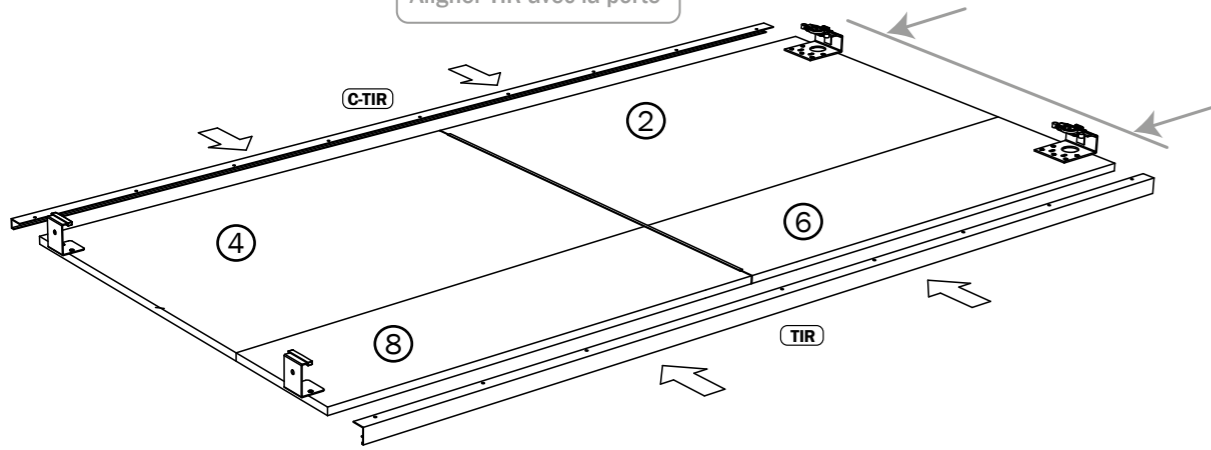


8 Plafón Pequeño Inferior Izquierdo
 280x959x16
 Teto pequeno inferior esquerdo
 Small bottom-left panel
 Panneau petit inférieur gauche

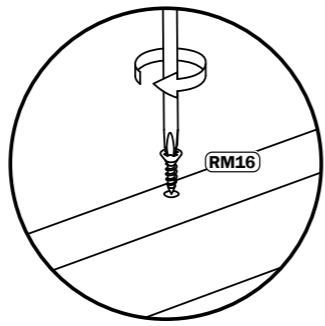
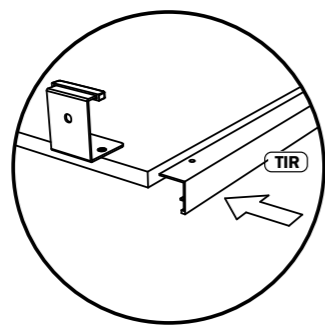
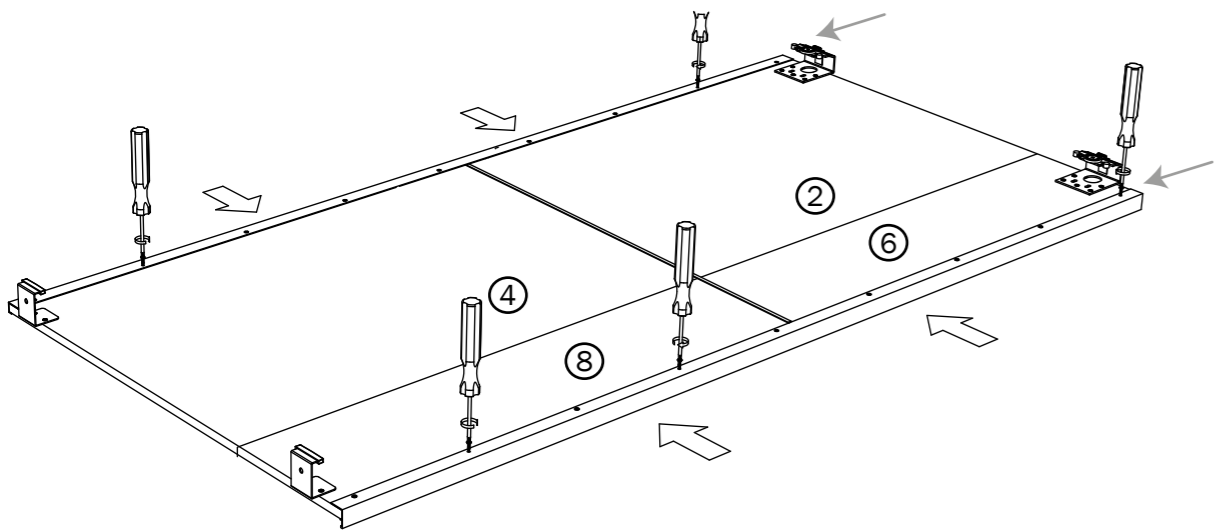


10

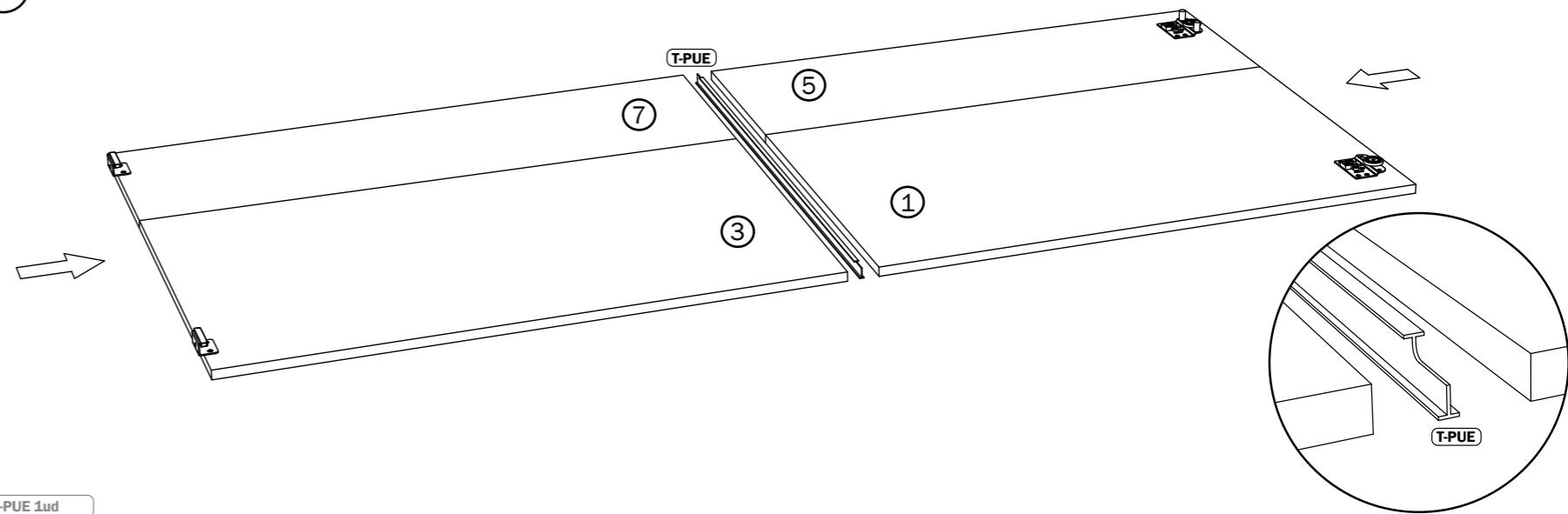
Alinear TIR con la puerta
Alinhar TIR com a porta
Align TIR with door
Aligner TIR avec la porte



Empieza a atornillar por éste lado
Comece enroscando deste lado
Start screwing on this side
Commencez vissage de ce côté



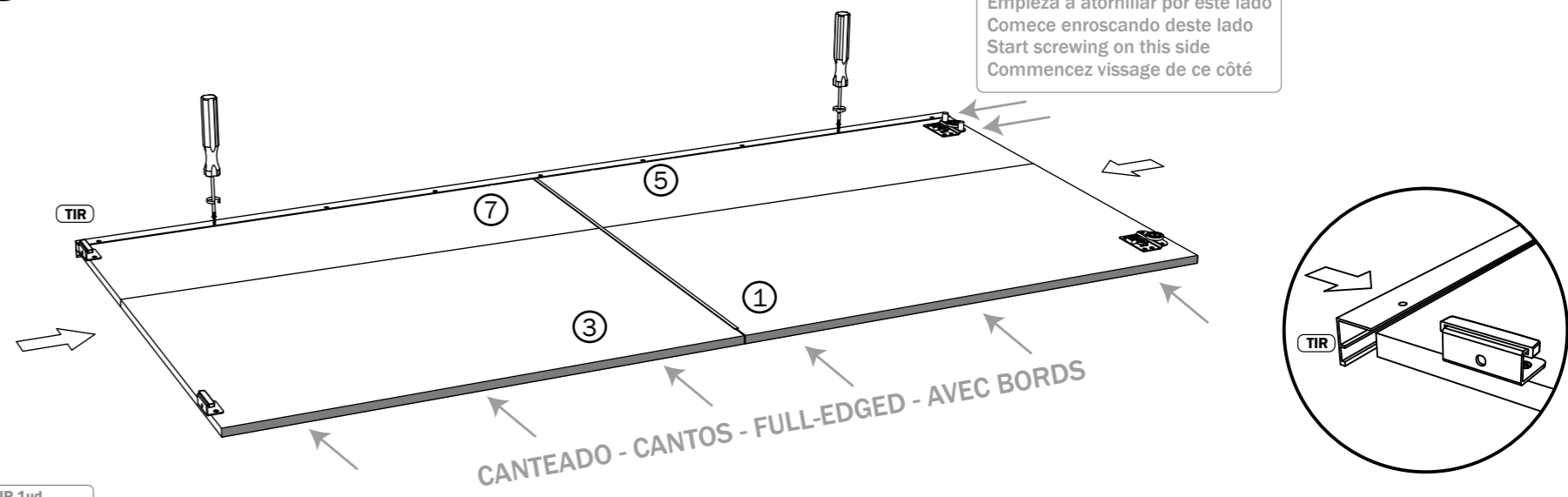
11



T-PUE 1ud

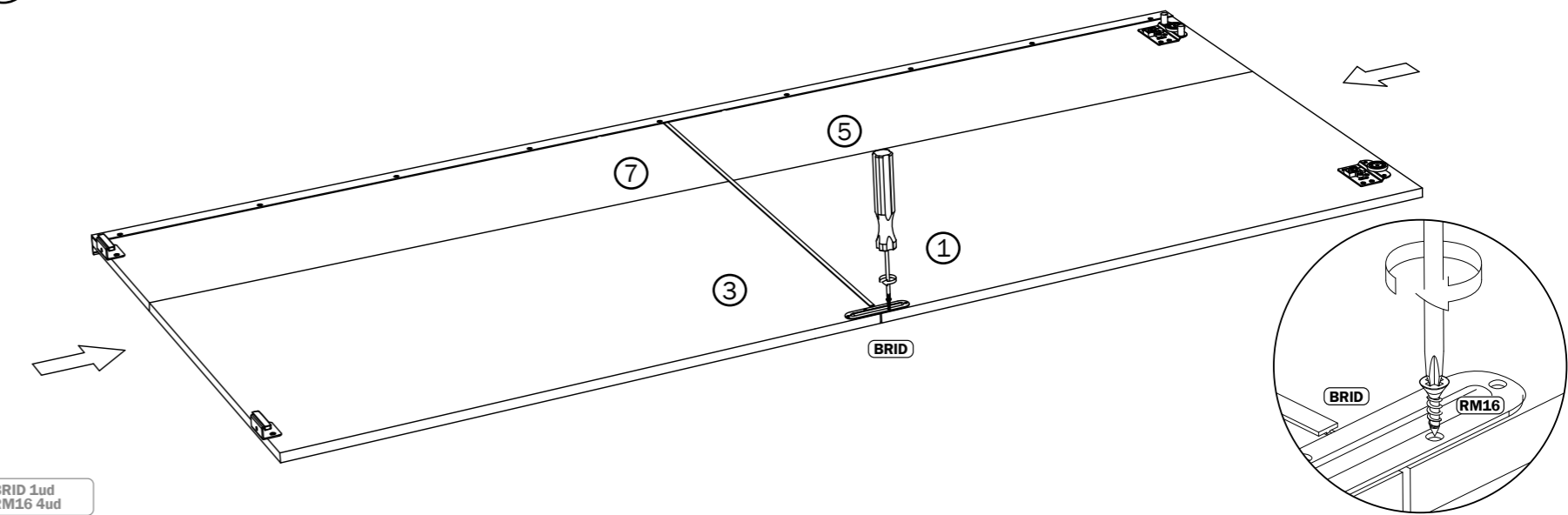
12

Empieza a atornillar por éste lado
Comece enroscando deste lado
Start screwing on this side
Commencez vissage de ce côté



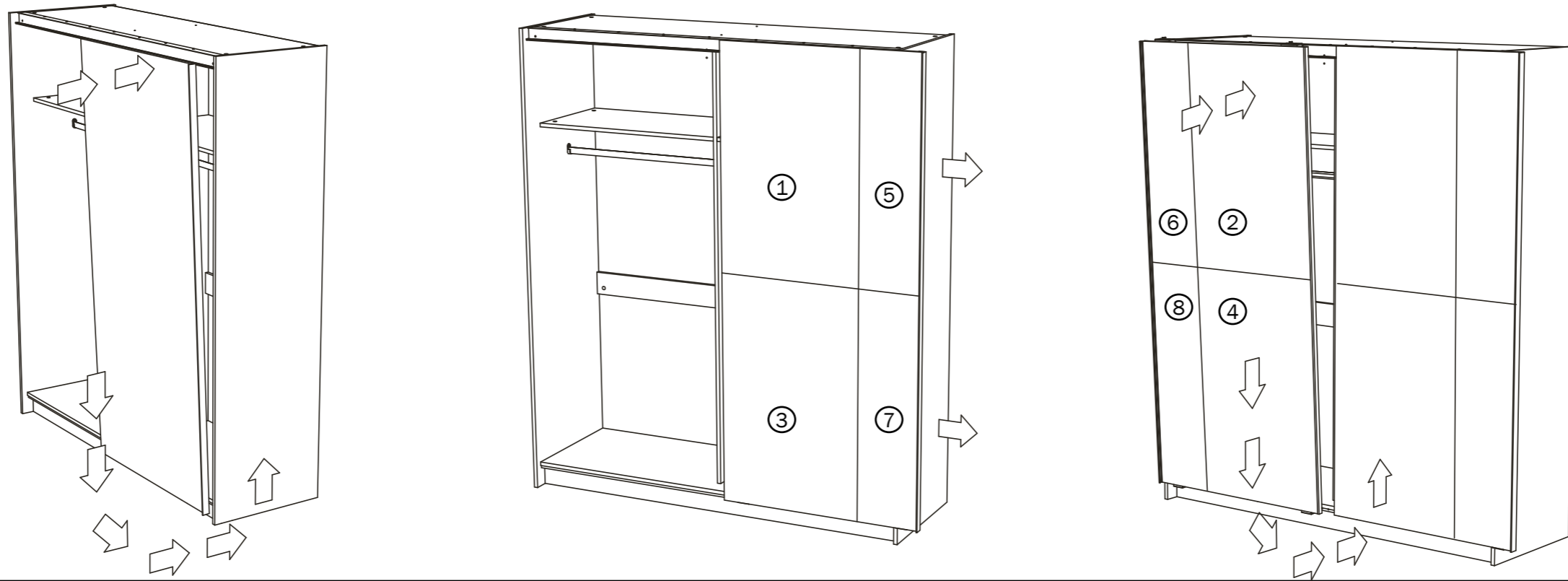
TIR 1ud

13

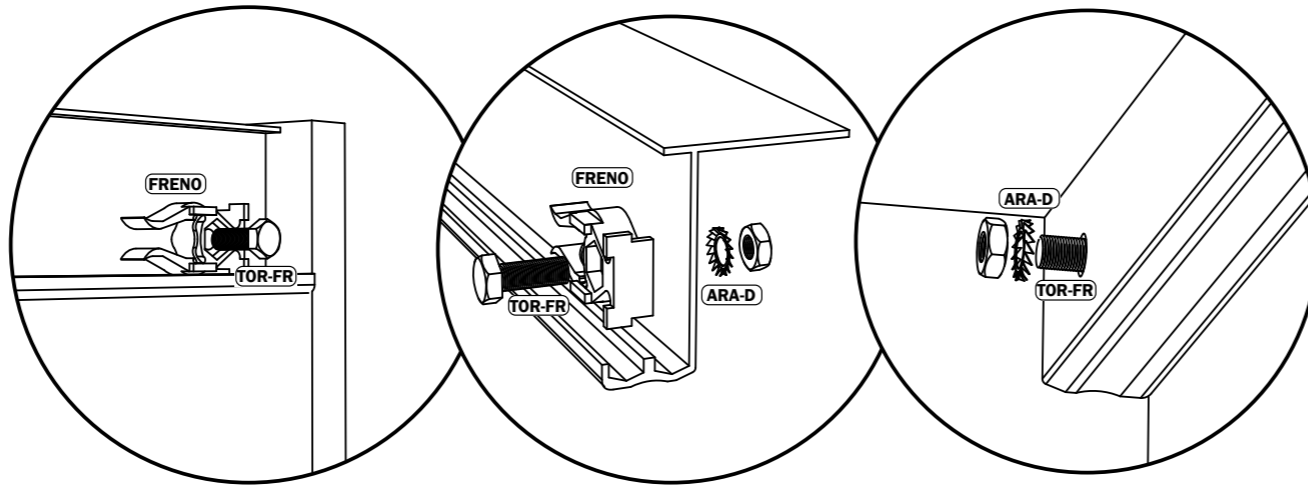
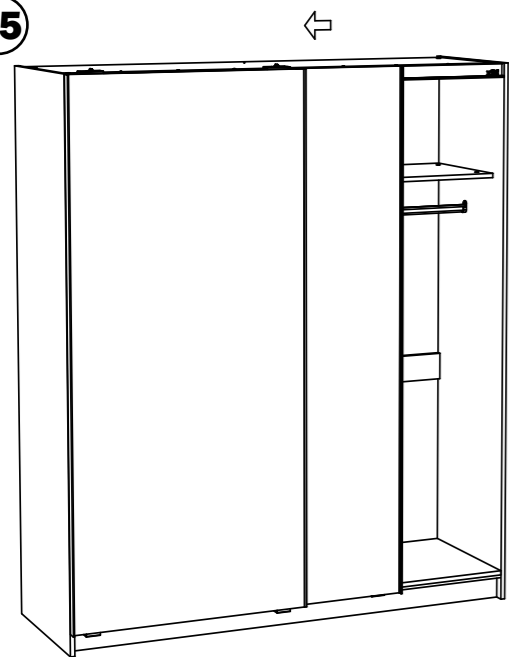


BRID 1ud
RM16 4ud

14

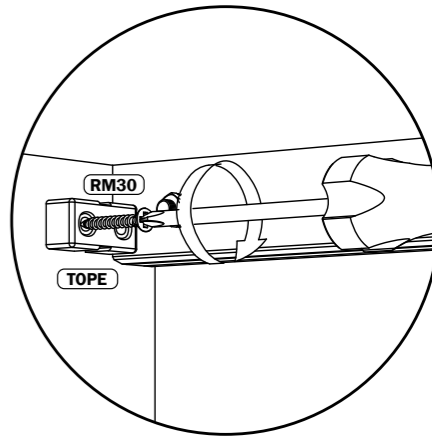
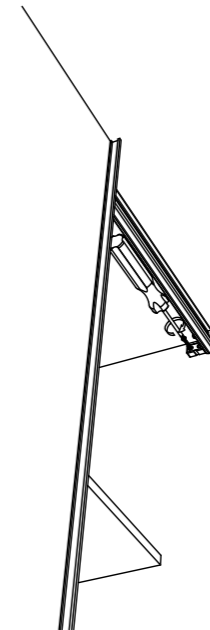


15



FRENO 2ud
TOR-FR 2ud
ARA-D 2ud

16



TOPE 2ud
RM30 4ud

COLOCACIÓN DE LOS SEGUROS

COLOCAÇÃO DOS SEGUROS - PLACEMENT OF THE LOCKS - PLACEMENT DES SERRURES

